

2056.05
-2-

BLANKS TO:
HOPEWELL FARM
12-18-02
52321-02

55

VOL H

1328.42

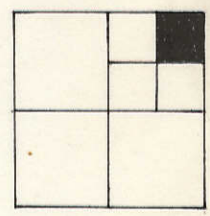
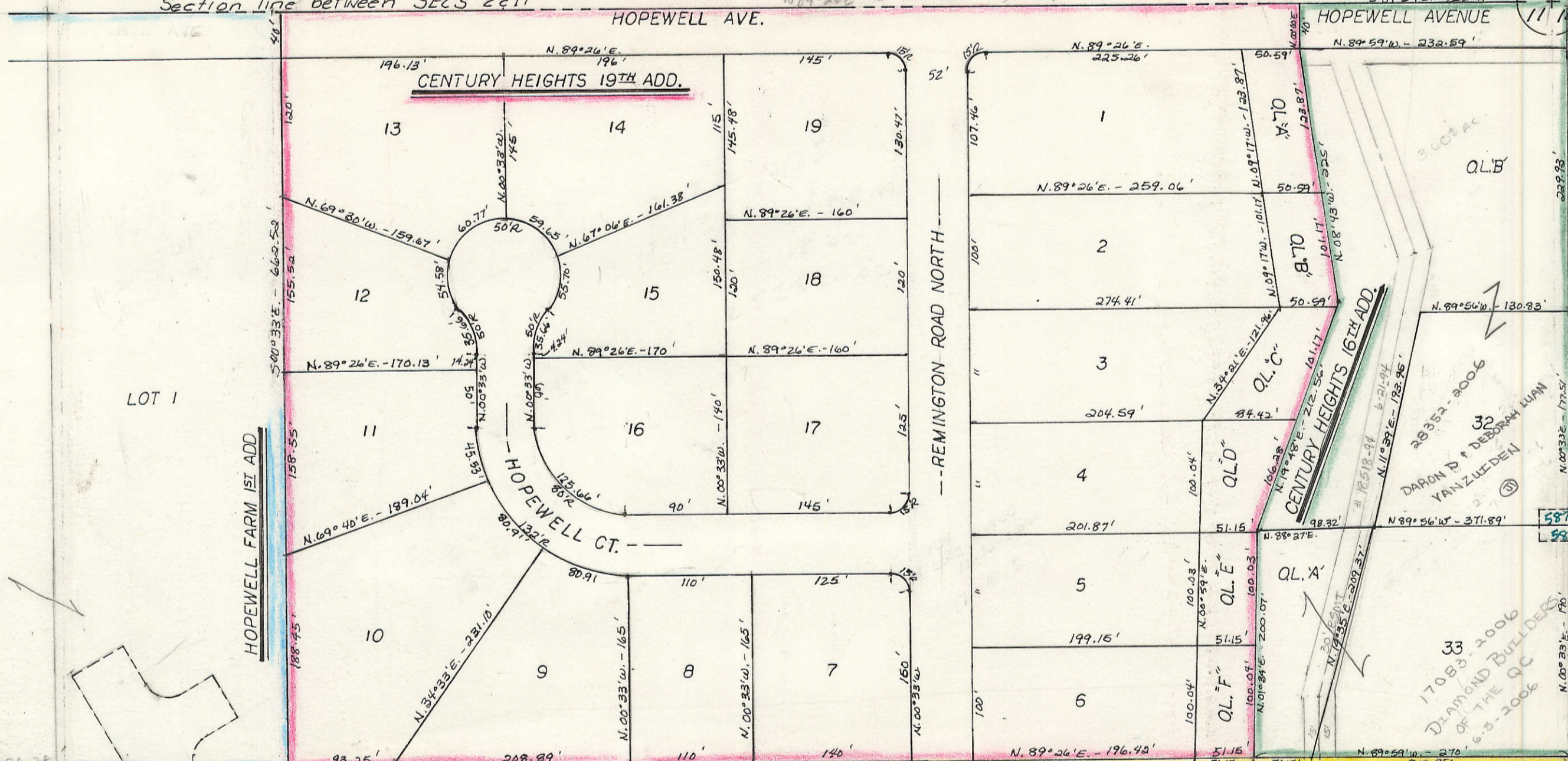
AREA SURVEY
51441-02
12-16-02

NE Corner SEC 11-78-4

2.1

Section line between SECS 2 & 11
HOPEWELL AVE.

HOPEWELL AVENUE



LOT 1

QLB'

QLC'

QLD'

QLE'

QLF'

QLG'

QLH'

QLI'

QLJ'

QLK'

QLL'

QLM'

QLN'

QLO'

QLP'

QLQ'

QLR'

QLS'

QLT'

QLU'

QLV'

QLW'

QLX'

QLY'

BLANKS TO:
Century Heights CC
2004-3-11-04
9-3-2004

DARON P & DEBORAH LUAN
VANZUELEN
38352-2006

17083-2006
DIAMOND BUILDERS
OF THE QC
6-5-2006

5874
5870
5848

SEC 12

1

SECTION LINE BETWEEN SECS 11 & 12

FIELDSTONE POINTE 2ND ADD

LOT 1

537.02

537.02

537.02

537.02

537.02

537.02



TRANSFER PAGE 25-2480

23

BLANKS TO:
WINDMILLER DESIGN &
DEVP. CO. 5-1-2002
#17637-2002

Survey
14-20-2002
4-9-2002